



SPORT PRODUCT GUIDE 2026



GOLF
12-29



**FOOTBALL
& RUGBY**
30-37



**CRICKET
& TENNIS**
38-43



**RACING &
EQUESTRIAN**
44-47

CONTENTS

4	About Us
5	New Cultivars
6	Disease Tolerance in Winter Sport: Elite Defence
6-7	Disease Tolerance
8-9	SGT & Disease Tolerance
10	Ultrafine & SOS
11	RPR

12 GOLF

Ryegrass-Free

14	All Bent
14	Classic 80:20
15	Fescue
16	Shoreline
17	Open Rough
20	SGT All Hard
21	SGT Fine Fescue

Rye/Fescue Mixture

21	SGT Rye Fairway
22	Ultrafine 30
22	Ultrafine 60

Pure Ryegrass

23	Ultrafine 100
24	Extreme
25	RPR Golf

30 FOOTBALL & RUGBY

32	Elite Sport
33	Elite Defence
34	RPR Sport
34	Multi Sport
35	SOS

38 CRICKET & TENNIS

40	Extreme
41	Ultrafine 60
41	Ultrafine 100

44 RACING & EQUESTRIAN

47	RPR Sprint
47	SOS

48	Turf Grass Identification
49	Guide to Species Characteristics & Sowing & Seeding Rates
50	Our Partners & Distributors
51	Our Team

Whatever the conditions, however tough the competition

Sports grasses have a lot to contend with. From tees to courts, pitches to out-field, and starting line to final furlong, every square metre matters.

Increasing pressure from extended seasons, and growing demand for competition surfaces to be in peak condition makes grass pitches, courses and courts the real focus of the contest.

For every playing surface, the grounds team matters most of all.

Working with you to understand your changing needs and solve the challenges is central to the way we progress at Barenbrug.



Long term development and breeding

Ongoing investment in new grass cultivars and products yields continuous improvements in the qualities of your playing surface.



In depth consulting and guidance

Collaboration in product design, development and trialling brings us closer together.



Nationwide UK service and support

In-field expertise and technical help is on hand to find immediate solutions to grass needs on site.



Bastiaan and Frank Barenbrug

The Barenbrug Family

Founded in 1904, Barenbrug is a family owned and run group, dedicated to grass seed development and production to support sports, leisure, and agricultural needs.

Barenbrug UK was established in 1983; since then we have been active supporters of the creativity, tenacity and commitment of turf managers throughout the UK and Republic of Ireland. With our R&D and breeding insight, we share our knowledge and experience to help you and your team excel.



New Cultivars

BARGKAMP

Bargkamp is the latest winter sports perennial ryegrass from our Dutch breeding station. It takes its name from a famous Dutch footballer for that reason. It is ranked #4 in Table S1 of the 2026 Turfgrass Seed booklet and takes its pride of place in the Sport Range as part of the market-leading **Elite Sport** mixture and **RPR Sport**.

It is a true winter sports type, with exceptional winter wear tolerance and recovery. It is ranked #1 for Recovery in Table S1 of all market-available cultivars.

NIGHTCLUB

Nightclub is a new Chewings red fescue for 2026. It comes from the same breeding programme that has delivered cultivars like *Musica* and *Bodega* in the past. It is a fantastic addition to **Fescue** and **SGT Fine Fescue**.

It tops the L3 BSPB Turfgrass Seed as the only cultivar with a mean score above 8.0 and is ranked #5 for greens use in the same publication. It also has the highest Red Thread disease ranking of any available cultivar in the booklet.

BARLEGANT

Barlegant is an exciting new hard fescue cultivar featured in the innovative SGT products **SGT Fine Fescue**, **SGT Rye Fairway** and **SGT All Hard**, primarily aimed at overseeding and divoting medium-fine turf (tees and fairways) in links and heathland golf courses.

It offers a new standard of turf quality for the species and is listed as the #1 cultivar in Table L6 of Turfgrass Seed 2026. Its Visual Merit score is a particularly significant breeding advancement. Being a hard fescue, it delivers turf performance under abiotic stress conditions, notably drought conditions and low nutrition. High Dollar Spot tolerance is an additional aspect of its SGT (Sustainable Grass Technology) credentials.

Barlegant is paler in colour than most hard fescues, which helps to blend visually with red fescues in a mixed sward.



Hard Fescue *Barlegant*



Hardtop VS *Barlegant*

HOWDEN

Howden was a new browntop bentgrass for 2025; it can be found in **All Bent**. It follows in the footsteps of *Charles*, being bred in New Zealand. It has performed very well in BSPB trials and is ranked #3 in Table G1 2026.

In early UK and Ireland development trials it appears to offer superior *Microdochium* tolerance whilst retaining exceptionally high density, fineness of leaf and tolerance to close mowing.

BARPROPEL

BaRPRopel is the latest generation of RPR cultivar from Barenbrug's European breeding programme and was new to the Sport Range for 2025. It can be found in **RPR Golf and RPR Sport**. It offers improved levels of fineness of leaf and density, as well as an aggressive stoloniferous growth habit, which translates into fast establishment and recovery from wear.

The ability of RPR cultivars to regenerate delivers an added dimension to perennial ryegrass. *Barpropel* is supplemented with fine-leaved cultivars adapted to golf management in RPR Golf and table-topping wear tolerant ryegrasses in RPR Sport for winter sport demands.



Barpropel

Winter Sports Control

Disease Tolerance in Winter Sport: Elite Defence

Disease tolerance of mixtures and cultivars is an ever-increasing focus of breeding and R&D programmes. Climate change is rapidly impacting on turfgrass disease incidence and severity in the UK and Ireland, and simultaneously, chemical prevention of pathogens is becoming increasingly challenging with new legislation.

As a grass breeder, Barenbrug is acutely aware of this, and the responsibility we have to provide products that can offer a potential solution to the problems faced by turf managers. A good example of this is the recent occurrence of Grey Leaf Spot (GLS; *Pyricularia grisea* or *P. oryzae*) in stadium environments in the south of England. GLS only appeared in France a few years ago, and likely due to increasing temperatures and humidity, it now seems that the UK will have to deal with this damaging disease on enclosed perennial ryegrass pitches for the foreseeable future.

Help is at hand though. Barenbrug breeders on a global level have been screening ryegrasses for this pathogen for many years, and have identified several **European-bred, diploid** cultivars that have strong tolerance to a range of *Pyricularia* isolates (the fungus has large variability).

The launch of **Elite Defence** (page 33) in 2024 represented the culmination of a huge R&D effort that promises a product with significantly higher tolerance to GLS, as well as increased protection against *Drechslera* leaf spot and Brown Patch (*Rhizoctonia solani*). Significantly, the product utilises only **European-bred, diploid** cultivars, ensuring minimal compromise on other factors such as wear tolerance and shoot density – traits that have quickly established **Elite Sport** as the market-leading winter sports seed mix in the UK.

Grey Leaf Spot Data

Several laboratory and field trials in Europe have resulted in the identification of *Amiata*, *Barprimum* and *Barorlando* as cultivars with excellent tolerance to GLS. Figure 1 shows data from one of these trials, with % surviving plants after a GLS inoculation in laboratory conditions. The other cultivars in trial include GLS-tolerant material from USA, as well as other European varieties from Barenbrug's portfolio.

Figure 2 shows an independent turf field trial from Landlab in Italy, after a particularly damaging naturally occurring GLS infection. The potential benefits of *Amiata* and *Barprimum* are clear to see.

Figure 1 - GLS Laboratory Trial Data

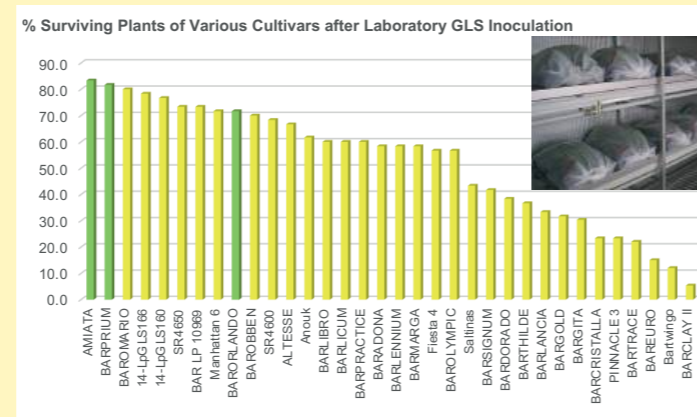


Figure 2 - GLS infection in independent field trials with Landlab (Italy)



Figure 3 - 2016 S1 BSPB/STRI Trial Scores of *Drechslera* Leaf Spot Tolerance

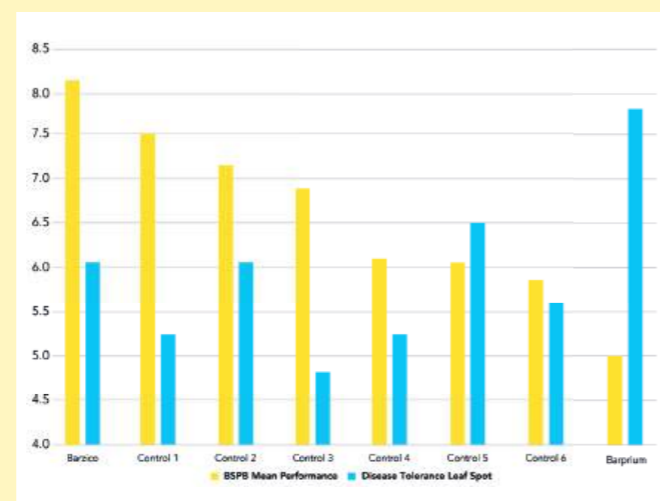


Figure 4 - Comparison of Sport Index & *Drechslera* Leaf Spot in Perennial Ryegrasses French Turfgrass List 2025

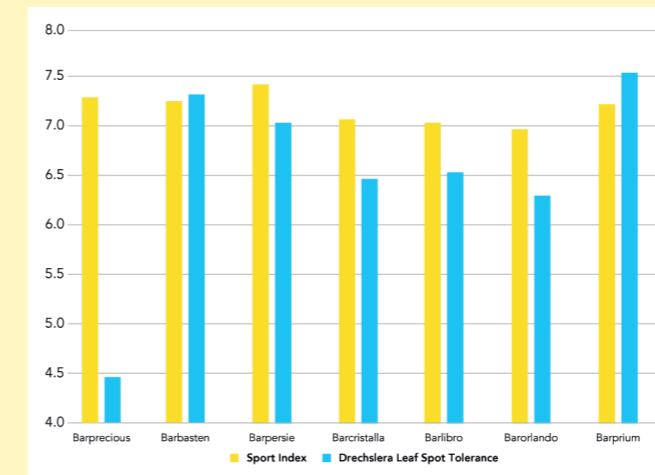


Figure 5 - Brown patch tolerance of Barenbrug cultivars (internal laboratory trials)

Cultivar	Brown Patch Mean Score
Bartrace	7.67
Barprimum	7.50
Barorlando	7.17
Barprecious	7.17
Barbions	7.00
Barlangia	6.83
Bareuro	6.83
Babosa	6.67
Barthierry	6.67
Barlicum	6.50
Barcristalla	6.50
Amiata	6.50
Barbasten	6.50
Barpropel	6.50
Barroben	6.50
Barlibro	6.33
Barpersie	6.00
Barclay II	5.83
Barolympic	5.17

Drechslera Leaf Spot Data

Figures 3 and 4 represent data on *Drechslera* Leaf Spot from independent turf trials in the UK (BSPB/STRI 2016 S1 trial) and across Europe (GEVES Turfgrass List), respectively. *Barprimum* and *Barbasten* exhibit high tolerance levels to this disease.

Brown Patch Data

In internal Barenbrug trials, Figure 5 shows a ranking of breeding material against *Rhizoctonia*. *Barprimum* and *Barorlando* offer good protection against this pathogen.

Conclusion

Disease tolerance is an increasingly important part of turfgrass breeding for the UK market. Traits such as wear tolerance will always be desirable in perennial ryegrass for winter sports use, but environmental pressures, particularly in a large stadium begin to tip the balance in favour of other aspects. With technologies such as hybrid pitches, under-soil heating and growth lighting, wear tolerance is already well covered.

The launch of **Elite Defence** in 2024 was the result of extensive research into variety tolerance against diseases increasingly associated with stadium environments; specifically GLS, *Drechslera* Leaf Spot and Brown Patch. **Elite Defence** (page 33) promises increased disease protection with excellent genetic colour and wear tolerance.



Disease Factfiles

Our disease factfiles are an essential part of the Barenbrug resources range.

Grass disease is an ongoing problem for many when maintaining golf courses, football/rugby pitches and cricket outfields. Our series of factfiles are great tools to learn about different grass disease types, how to reduce risk, identify, and control them. To download your free copies, visit our website.

www.barenbrug.co.uk/disease-factfiles-amenity



“Sustainable Grass Technology” – Barenbrug’s research-driven concept designed to deliver outstanding turf performance in high stress conditions with reduced fertiliser, chemical and water inputs.

Barenbrug aims to develop seed cultivars and grass seed mixes that respond to customers’ needs and a changing climate. Our Sustainable Grass Technology (SGT) products are designed to reduce the chemical, fertiliser and water input for turf managers.

Products under the SGT banner promise stress-tolerant grass for sustainable turf management and are the result of years of independent and in-house trials.

Barenbrug’s SGT products have been tested extensively, and offer exceptional performance in one or more of four pillars of research:

- Nitrogen-use efficiency to reduce fertiliser use and cost
- Drought tolerance to increase survival and reduce the need for irrigation in stress periods
- Increased disease tolerance to reduce the need for fungicide
- Lower biomass production (or clipping yield) to reduce mowing frequency, man hours and fuel use

Visit our website to explore our detailed video series showcasing the years of independent and in-house trials that led to the development of SGT:
www.barenbrug.co.uk/sports/technologies/sgt



Sustainable

Drought tolerance

The SGT products are curated from particular species and cultivars. In drought trials at Landlab in Italy and Barenbrug breeding stations, hard fescue always out-performs red fescue in periods of heat and drought (Fig. 1). The launch of **SGT All Hard** for 2026 allows end-users to focus efforts in overseeding gains in this species, and hard fescue also features strongly in both **SGT Fine Fescue** and **SGT Rye Fairway**.



Figure 1 - Drone Image From Landlab. Highlighted plots are the hard fescue. The quality and endurance of hard fescue stood alone during the most intense heat.

Integral in **SGT All Hard** and **SGT Fine Fescue** for 2026 are two new cultivars of hard fescue, *Barlegant* and *Beacon*. *Barlegant* offers a new standard of turf quality for the species and is listed as the new #1 cultivar in Table L6 of Turfgrass Seed 2026; *Beacon* is not far behind in the #2 position.

In the GEVES Turfgrass List (independent trials in several European countries), *Beacon* is #1-ranked for hard and sheep’s fescue for Lawn Index. The introduction of these two new cultivars cements SGT products in their market-leading position for overseeding golf fairways.



Nitrogen Efficiency

In **SGT Rye Fairway**, *Barprimum* offers proven capacity for nitrogen-use efficiency, requiring up to 50% less nitrogen. In an 18 month STRI trial (shown in Fig. 2), results demonstrate nitrogen efficiency from a number of cultivars against live ground cover. *Barprimum* delivers the highest mean turf cover compared to all other cultivars. Put simply, it requires far less N to deliver equivalent turf performance.

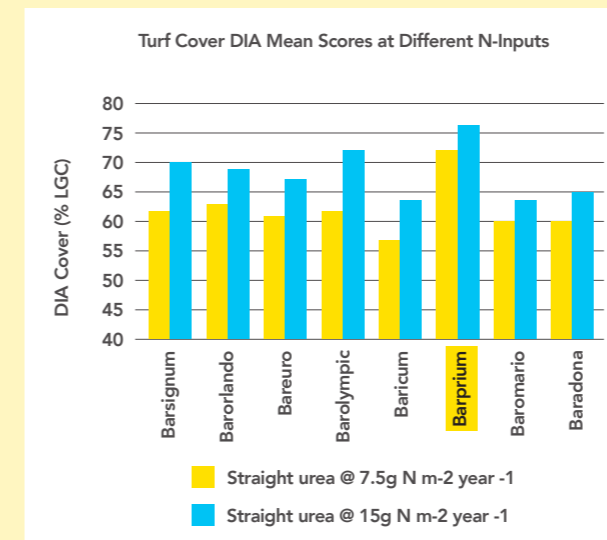


Figure 2 - STRI N-Efficiency Trial Data. *Barprimum* delivers equivalent mean turf cover to all other cultivars at 50% less nitrogen input.

STRI researchers concluded: “The best performing cultivar in this trial was *Barprimum*, with good turf quality and coverage observed at all N levels and N types. Even at very low levels of N, *Barprimum* still showed good quality and coverage.”

Barprimum is highly ranked in the BSPB Turfgrass Seed 2026 booklet with a mean score of 7.4 on Table L1 and exhibits strong summer colour – another useful characteristic for low-input golf fairways.

Products available in the SGT range represent the culmination of many years of research and targeted at golf course fairway overseeding to combat the effects of climate change and reduce future maintenance inputs.

Products available with SGT technology:

- SGT All Hard, page 20.
- SGT Fine Fescue, page 21.
- SGT Rye Fairway, page 21.

Disease Tolerance

Disease tolerance is an increasingly important focus of Barenbrug’s turfgrass breeding programme for Europe. SGT products contain varieties that have the highest levels of protection against a range of relevant pathogens.

Hard fescue as a species has excellent tolerance to Dollar Spot, which is an increasing concern, particularly on links courses. Figure 3 has data from recent NTEP trials, showing that hard offers higher levels of tolerance on average compared to the red fescue sub-species. Overseeding fairways with **SGT All Hard** or **SGT Fine Fescue** is likely to be a good option to improve fairway performance against Dollar Spot.

	FRR (Strong)	FRC (Chewings)	FO (hard/sheep's)	FRL (slender)
cultivars	6.9	8.2	8	7.4
	6.7	7.9	7.8	6.6
	6.7	7.8	7.7	5.9
	6.6	7.7	7.7	5.6
	6.2	7.6	7.6	
	6.1	7.6	7.5	
	5.8	7.5	7.5	
	5.6	7.4	7.4	
	5.4	7.2	7.4	
	5.2	7.1	7.2	
	5.2	7	7.2	
	5.1	7		
	4.9			
	4.9			
	4.7			
Mean	5.73	7.50	7.55	6.38

Figure 3 - 2015-2019 NTEP fine fescue trials; all data, all locations.

Red Thread is a common turfgrass disease affecting sustainably managed turf areas, such as fairways. SGT mixtures contain highly ranked cultivars for Red Thread tolerance, such as strong creeping red fescues *Barrissee* (#1-ranked; Table L5) and *Barjessica* (#3-ranked; Table L5), slender creeping red fescues *Barnoustie* (#4-ranked), and Chewings red fescue *Nightclub* (#2-ranked).

The designated SGT perennial ryegrass *Barprimum* not only delivers benefits in terms of drought tolerance, nitrogen-use efficiency and lower biomass production, but it also exhibits broad tolerance to a wide range of disease pathogens including *Drechslera* leaf spot, GLS and *Rhizoctonia*.



Ultrafine

The leading fine leaf perennial ryegrass range from Barenbrug is available with three options of superior products, for use in areas of fine turf that demand close-mowing and high wear.

As interest in perennial ryegrass products increases, Barenbrug has stepped in to offer greater flexibility, suited to areas requiring fine turf and high wear. Barenbrug's purpose-bred perennial ryegrasses are designed to last during the season, offering solutions for common problems from weather extremes and demands of the course and players.

The backbone of the Ultrafine range is the market leading cultivar, *Barolympic*. With a score of 8.4 in the 2026 BSPB G4 table of Turfgrass Seed, *Barolympic* is by far the standout perennial ryegrass cultivar for high quality, close mown turf.

Barpersie, a more recent cultivar to Ultrafine products looks set to dethrone *Barolympic* from its decade of dominance with a New Cultivar score of 8.9 on Table G4. It has an excellent combination of wear tolerance, shoot density, visual merit, and leaf fineness. It is ranked #2 in Table L1 of Turfgrass Seed with top scores for both Visual Merit and Shoot Density. Its very low slow regrowth score backs up its proven performance under wear (ranked in the top-10 on table S1) – this cultivar has further built on **Ultrafine 100**'s undoubted reputation as **THE** outstanding summer sports ryegrass blend.

Ultrafine products available include:

- Ultrafine 30 - A 30% perennial ryegrass blend, page 22.
- Ultrafine 60 - A 60% perennial ryegrass blend, page 22.
- Ultrafine 100 - A 100% perennial ryegrass blend, page 23.



Overseeding



SOS Fastest overseeding solution.

The saviour of the winter season, this specially formulated solution germinates quickly to resurrect high traffic areas from mid-season turf damage, aiming for the fastest possible establishment and growth in cool temperatures.

- Designed for emergency winter turf repair
- Fast germination, establishment and growth
- Can be used at temperatures as low as 3.5°C

SOS is designed with mixture synergy in mind, utilising tried and tested Barenbrug annual and perennial ryegrass cultivars for a longer-term winter repair solution.

Barterra is a fine-leafed annual ryegrass that will germinate as low as 3.5°C; quicker and at lower temperatures than perennial ryegrass, including tetraploid varieties.

Barenbrug research shows the advantages of using a hard-wearing diploid perennial ryegrass, rather than a tetraploid alternative, as a partner to annual ryegrasses for winter grass seed mixtures.

Overseeding at lower temperatures

In recent trials - overseeded in January at a soil temperature of 6.2°C - SOS was shown to establish and restore a sward faster than a perennial ryegrass, recovering from 20% to more than 60% within a month (see Fig. 1).

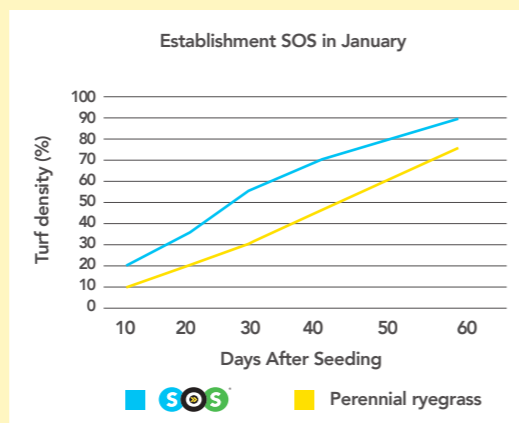


Figure 1

Products available with SOS technology:

- SOS for Football & Rugby, page 35.
- SOS for Racecourses, page 47.

Regenerating



Revolutionary technology: regenerating grass.

Regenerating Perennial Ryegrass (RPR) is a group of cultivars bred from Barenbrug's grass breeding stations that delivers unparalleled recovery from wear and a naturally self-regenerating growth habit.

- Faster establishment compared to normal perennial ryegrasses, particularly 'fill-in' between disc-seeding lines or in golf divot repair
- Gives a very dense sward, excellent wear tolerance and unparalleled recovery after wear
- Added traction strength due to interconnected plants, RPR's creeping growth habit helps fill in sand slits and drainage lines

Normal perennial ryegrasses exhibit a purely tufted growth habit, with limited sideways growth. Barenbrug's unique RPR cultivars produce determinate stolons (Fig. 1) (a stem that grows below the ground surface) as it establishes and grows.

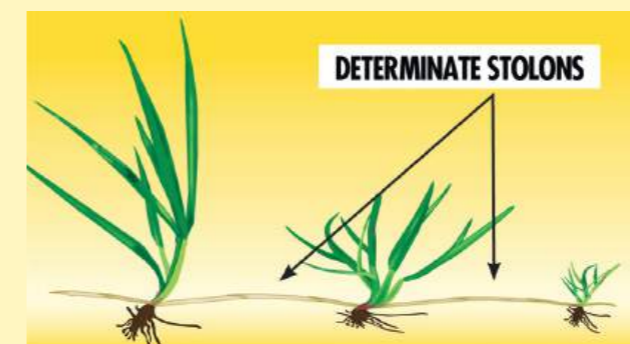


Figure 1 - The lateral growth habit results in fast establishment between seeding lines and unparalleled capacity for recovery after and during wear. Figure 2 clearly shows the rapid spread of RPR.



Figure 2 - Perennial ryegrass (left) v RPR (right), both sown at the same time.

The determinate stolons are growth shoots emerging from auxiliary buds at the base of each plant. When an RPR plant is damaged, creating space, determinate stolons will grow horizontally into the empty space and develop roots (Fig. 1). Each RPR plant connects to other plants and into the top layer of the soil; this produces a network of stolons.

Our unique products that utilise the RPR technology - **RPR Sport**, **RPR Golf**, **RPR Sprint** - are blends of hard-wearing perennial ryegrasses and the RPR cultivars, *Barlibro* and *Barpropel*, for the renovation and construction of elite winter sports pitches, racecourses, and golf courses.

Barpropel was new to the portfolio for 2025, enhancing traits such as leaf fineness and shoot density in **RPR Golf**. It is included in **RPR Sport** for the first time in 2026.

Products available in the RPR Range:

- RPR Golf, page 25.
- RPR Sport, page 34.
- RPR Sprint, page 47.

Golf

Parkland, heathland or links – we have you covered from tee to green.

With over 3000 golf courses in the UK and Ireland, it's not surprising to hear how different the needs and experiences of golf course managers are.

Whether you are alone managing a remote 9-hole links course on the Atlantic coast or leading a team of twenty staff on a pristine striped parkland in a large city, we have the knowledge, research and breeding to help find a solution to your problem. From a wiry salt-tolerant fescue to an immaculate polished fine-leafed ryegrass, we have bred it, tested it, grown it, and bagged it!

In the pages that follow, our golf range is presented in groups: ryegrass-free, ryegrass and fescue mixtures, and pure ryegrass.



INTRODUCTION

TECHNOLOGY GROUPS

GOLF

FOOTBALL & RUGBY

CRICKET & TENNIS

RACING & EQUESTRIAN

TECHNICAL & SUPPORT

All Bent

A 100% browntop bentgrass blend designed for overseeding and species exchange in golf and bowling greens.

- Blend of three browntop bentgrass cultivars
- *BarKing* has particularly strong *Microdochium* (Fusarium) tolerance
- 100% browntop bentgrass delivers superior performance in shade

Usage

Designed for the construction and overseeding of golf and bowling greens.

Features & Benefits

A 100% browntop bentgrass blend designed for overseeding and species exchange in greens. It is of particular interest to golf courses focussed on outcompeting *Poa annua* and improving *Microdochium* (Fusarium) tolerance of greens.

The mix includes *Charles*, the #2 ranked cultivar alongside *Howden* as the #3 ranked browntop bentgrass. Their scores for visual merit and shoot density promise to have a major impact as part of a species exchange programme, improving golf greens and outcompeting the ubiquitous *Poa annua*.

BarKing is a European-bred cultivar with exceptional tolerance to *Microdochium* Patch disease (Fusarium) and superior winter colour.

Recent data from the USGA suggests browntop (colonial) bentgrass is superior to creeping bentgrass in performance under low light or shade conditions (see Fig. 1). This correlates with **7-8 weeks** of additional optimal light conditions for browntop in the UK, compared to creeping bentgrass.

Relative Shade Tolerance of Common Turfgrasses



Figure 1 - Relative Shade Tolerance of Common Turfgrasses

- Greens Tees Fairways Walkways Roughs

How to use it

- Sowing rate:** 8-10g/m²
- Oversowing rate:** 4-6g/m²
- Sowing depth:** rootzone contact
- Mowing height:** down to 3mm

In the bag	Bag size 20kg
<i>BarKing</i>	40% Browntop bentgrass
<i>Charles</i>	30% Browntop bentgrass
<i>Howden</i>	30% Browntop bentgrass

Find out more at barenbrug.co.uk/sports/products/all-bent

Classic 80:20

The traditional 80:20 mix of red fescue and browntop bentgrass, for a consistent and balanced fine-turf sward when sowing out greens.

- 80:20 fescue:bent remains the preferred option in independent trials for seeding out new golf greens
- Combination of high shoot density and disease tolerance assists in outcompeting *Poa annua*



Usage

Construction of free-draining fine-turf areas.

Features & Benefits

Red fescue contributes to 80% of the mixture and is made up of both slender creeping red fescue and Chewings red fescue. The combination of these two sub-species offers the best solution for year-round performance and growth in fescue-dominant turf.

Includes the highly rated Chewings red fescues, *Dancing* and *Bodega*, and #1 & #2 slender creeping red fescues *Barnoustie* and *Barquess* which were both additions in 2025. These are combined with the #2-rated available browntop bentgrass on the market, *Charles*, with a mean score of 7.7 in Table G1 of Turfgrass Seed 2026, and *BarKing* with exceptional *Microdochium* Patch disease (Fusarium) tolerance and superior winter colour.

Chewings fescues will generally be most active in spring through to mid-summer, whereas slender creepers "kick-in" during early summer and perform to autumn.

- Greens Tees Fairways Walkways Roughs

How to use it

- Sowing rate:** 20-30g/m²
- Oversowing rate:** 10-20g/m²
- Sowing depth:** rootzone contact
- Mowing height:** down to 4mm

In the bag	Bag size 20kg
<i>Barnoustie</i>	20% Slender creeping red fescue
<i>Barquess</i>	20% Slender creeping red fescue
<i>Bodega</i>	20% Chewings red fescue
<i>Dancing</i>	20% Chewings red fescue
<i>BarKing</i>	10% Browntop bentgrass
<i>Charles</i>	10% Browntop bentgrass

Find out more at barenbrug.co.uk/sports/products/classic-80-20

Fescue

Barenbrug's most popular blend of red fescue cultivars ideally suited to free-draining, sandy soil.

- 50% slender creeping red fescue & 50% Chewings red fescue
- Features a combination of 4 highly ranked fescue cultivars
- Ideal for free-draining, sandy links greens
- Superb all-round disease tolerance, particularly Dollar Spot and *Microdochium*

Usage

Construction and overseeding of free-draining fine-turf areas.

Features & Benefits

The market-leading and top-performing fescue blend for overseeding and construction of free-draining fine turf.

The 2026 mixture contains four outstanding cultivars, all of which are recently released to the market.

Barnoustie and *Barquess* promise new levels of quality for slender creeping red fescue – they are the only cultivars on the market with BSPB mean scores of 8.0 and above in both L4 and G3 tables.

Nightclub and *Dancing* feature in the top 5 in both Chewings G2 and L3 tables. *Nightclub* is #1 in the lawns table and has very high Red Thread tolerance.

Barquess, with its pale green colour offers particularly fast early season growth for a slender and recent trials point to *Barnoustie* having a very high degree of Dollar Spot tolerance, which is also worth noting.



- Greens Tees Fairways Walkways Roughs

How to use it

- Sowing rate:** 25-35g/m²
- Oversowing rate:** 15-25g/m²
- Sowing depth:** 8-12mm below thatch
- Mowing height:** down to 4mm

In the bag	Bag size 20kg
<i>Barnoustie</i>	30% Slender creeping red fescue
<i>Barquess</i>	20% Slender creeping red fescue
<i>Dancing</i>	30% Chewings red fescue
<i>Nightclub</i>	20% Chewings red fescue

Find out more at barenbrug.co.uk/sports/products/fescue



Shoreline

An innovative 100% blend of slender creeping red fescues for areas exposed to high salinity, such as links and other coastal courses.

- 100% slender creeping red fescue blend
- Germination and survival in salt areas
- Featuring *Barnoustie* and *Barquess* – the latest cultivars from our European breeding programme

Usage

Overseeding and construction of free-draining medium-fine turf areas exposed to saline conditions.

Features & benefits

The name SHORELINE is derived from the Latin *litoralis*, the species name for slender creepers. The mix contains the top 2-ranked varieties in Turfgrass Seed G3: *Barnoustie* and *Barquess*.

Providing a superior salt tolerance for fescue dominant golf greens on links and seaside golf courses exposed to salt spray and salt-laden winds, it is suitable for the construction and overseeding of all areas of free-draining turf exposed to salt.

Salt tolerance is a complex issue. Most salt stress issues experienced on golf courses throughout the UK and Ireland are caused by salt spray or salt laden winds. Problems associated with high salinity soils are much more complex, and more difficult to manage due to the ability of varying soil particles to attract salt under differing environmental conditions.

The grass plant's response to salt stress can vary significantly during its life cycle. The plant's capabilities at different stages, from germination to established sward must therefore be tested to realise any practical solutions for a dedicated grass seed mix.

Testing on established grass plants has been carried out in two distinct environments; in a glasshouse grown in rootzone and secondly in field trial sites in native soils and imported rootzones from locations naturally exposed to salt stress. Slender creeping red fescue generally demonstrates superior salt tolerance in comparison with Chewings fescues. (See Fig. 1).



Figure 1 - Glasshouse salt tolerance trial on three month old established plants at Barenbrug Research. Chewings fescue (left) versus slender creeping red fescue (right) at 30,000ppm salt water irrigation over a period of three months.

Coastal

How to use it

Sowing rate 35-45g/m ²	Oversowing rate 20-30g/m ²	Sowing depth 8-12mm below thatch	Mowing height down to 4mm

In the bag		Bag size 20kg
<i>Barnoustie</i>	35%	Slender creeping red fescue
<i>Barquess</i>	35%	Slender creeping red fescue
<i>Viktorka</i>	30%	Slender creeping red fescue

Find out more at barenbrug.co.uk/sports/products/shoreline

Open Rough

A specialist blend of grass species designed to create a visually attractive and wispy rough.

- Early flowering seed heads to give definition in areas of outer rough
- Produces an attractive open, wispy sward to improve playability
- Option to add in additional specialist grasses to create a bespoke mix



Usage

Establishing areas of outer rough that are either left uncut or mown infrequently.

Features & benefits

The choice of grasses for outer roughs can make a huge difference to the visual appearance and playability of a golf course, not to mention serving as a habitat for wildlife.

OPEN ROUGH has been designed to produce an attractive, open textured sward that is visually appealing whilst at the same time being playable.

The use of slower growing grass species combined with the reduced sowing rate creates a rough that, subject to soil fertility, will not develop into a dense rough that 'swallows' golf balls.

Crested dogtail and hard fescue are both early flowering species. This means that they will produce a seed head earlier in the year, giving excellent definition and aesthetics.

Optional additional species – Sweet Vernal, Small Leaf Timothy, Yellow Oatgrass, Quaking Grass, Wavy Hairgrass, Tufted Hairgrass. Please enquire with your Barenbrug distributor or representative for further details on bespoke options.

Greens Tees Fairways Roughs

How to use it

Sowing rate 10g/m ²	Oversowing rate 10-15g/m ²	Sowing depth 8-12mm below thatch	Mowing height seasonal cutting

In the bag		Bag size 20kg
<i>Chewings red fescue</i>	35%	
<i>Hard fescue</i>	35%	
<i>Crested dogtail</i>	27.5%	
<i>Browntop bent</i>	2.5%	

Find out more at barenbrug.co.uk/sports/products/open-rough



Sustainable

Hard Fescue

Hard fescue as a turfgrass is a large part of the SGT promise. The species features strongly in both SGT Fine Fescue and SGT Rye Fairway and is 100% of SGT All Hard for those looking to maximise the species attributes in specific areas of the golf course.

The species traits of hard fescue are well documented – its value as a turfgrass comes from its ability to withstand abiotic stresses such as drought and low fertility. This has been proven in independent trials, for example in rainout/drought trials at Landlab in Italy and Barenbrug breeding stations, hard fescue always out-performs red fescue during stress periods (Fig. 1).



Figure 1 - Drone Image From Landlab. Highlighted plots are the hard fescue. The quality and endurance of hard fescue stood alone during the most intense heat.

Barenbrug has led the way in integrating hard fescues into golf courses for the last 10 years or more, and its importance during the drought and recovery during 2018-19 can not be underestimated. Hard fescue is very closely related to Sheep fescue to the point of their classification being unclear until their genetics were understood at the molecular level – for reference, Hard is hexaploid (six sets of chromosomes), whereas Sheep fescue is tetraploid (four sets).

Recent academic reviews have postulated that hard fescue as a species has superior tolerance to Dollar Spot, traffic and shade over Sheep fescue (Patton *et al.*, 2022 & Braun *et al.*, 2020)

Hard fescue has been worked on and improved by plant breeders extensively over the last 15-20 years. We are now seeing this work bear fruit, with new and improved cultivars reaching the market.

Included for 2026 are two new cultivars of hard fescue, *Barlegant* and *Beacon*. *Barlegant* offers a new standard of turf quality for the species and is listed as the new #1 cultivar in Table L6 of Turfgrass Seed 2026; *Beacon* is not far behind in the #2 position. The data is shown in Figure 2.

In the GEVES Turfgrass List (independent trials in several European countries), *Beacon* is #1-ranked for hard fescue for a range of traits including Lawn Index and Wear Tolerance. The introduction of these two new cultivars cements SGT Fine Fescue and SGT All Hard in their market-leading position for overseeding links and heathland fairways.

Cultivar	Shoot Density	Visual Merit	Mean
<i>Barlegant</i>	7.2	7.5	7.4
<i>Beacon</i>	7.3	6.9	7.1
<i>Crystal</i>	7.4	6.8	7.1
<i>Sword</i>	6.8	6.8	6.8
<i>Hardtop</i>	6.2	5.9	6.1
<i>Dumas 1</i>	5.9	5.8	5.9
<i>Mentor</i>	5.6	5.6	5.6

Figure 2 – Data for Hard Fescue under Lawn maintenance; Table L6 BSPB Turfgrass Seed 2026.



Disease Tolerance

Disease tolerance is an increasingly important focus of Barenbrug’s turfgrass breeding programme for Europe. SGT products contain cultivars that have the highest levels of protection against a range of relevant pathogens.

Hard fescue as a species has excellent tolerance to Dollar Spot, which is an increasing concern, particularly on links courses. Figure 3 has data from recent NTEP trials, showing that hard and sheep’s offers higher levels of tolerance on average compared to the red fescue sub-species. Overseeding fairways with SGT Fine Fescue and/or SGT All Hard is likely to be a good option to improve fairway performance against Dollar Spot.

cultivars	Dollar Spot Tolerance - All data, all locations 2015-2019 NTEP			
	FRR (Strong)	FRC (Chewings)	FO (hard/sheep's)	FRL (slender)
	6.9	8.2	8	7.4
	6.7	7.9	7.8	6.6
	6.7	7.8	7.7	5.9
	6.6	7.7	7.7	5.6
	6.2	7.6	7.6	
	6.1	7.6	7.5	
	5.8	7.5	7.5	
	5.6	7.4	7.4	
	5.4	7.2	7.4	
	5.2	7.1	7.2	
	5.2	7	7.2	
	5.1	7		
	4.9			
	4.9			
	4.7			
Mean	5.73	7.50	7.55	6.38

Figure 3 - 2015-2019 NTEP Fine fescue trials; all data, all locations.

Pest Tolerance

Hard fescue swards are also showing consistently lower damage from pests, including leatherjackets and worms. It appears that the abrasive texture of the leaves and/or the linin content of any thatch build-up decreases egg-laying and worm-casting (see example in Figure 4).



Figure 4 – Photograph of reduced pest activity in areas of hard fescue turf cover.

Patton, A., Braun, R., Barnes, M., Nelson, K., Reiter, M., Watkins, E., Kowaleski, A., Koch, P. & Murphy, J. (2022) Fine fescues: Understanding the differences. Horticulture and Landscape Architecture, Turf-63-W Purdue Extension, online.

Braun, R., Patton, A., Watkins, E., Koch, P., Anderson, N., Bonos, S. & Brilman, L. (2020). Fine fescues: A review of the species, their improvement, production, establishment, and management. Crop Science; 60: 1142-1187.

SGT

“Sustainable Grass Technology” – Barenbrug’s research-driven concept designed to deliver outstanding turf performance in high stress conditions with reduced fertiliser, chemical and water inputs.

SGT All Hard

SGT All Hard 100% hard fescue blend, utilising our sustainable grass technology (SGT), with cultivars bred to deliver reduced water, fertiliser and chemical inputs.

- SGT technology offers outstanding turf performance with reduced water, fertiliser and chemical inputs
- An overseeding mixture of three hard fescues to increase this species composition in sand-based fairways
- Hard fescue exhibits increased drought tolerance over red fescue and higher Dollar Spot tolerance than other fine fescues, including Sheep fescue.
- Wear tolerance and shade tolerance also superior to Sheep fescue
- Potential decrease in insect damage and worm-casting due to high lignin content forming a firm thatch barrier

Usage

Overseeding and divoting for fairways and roughs on sites with particular drought, disease or pest stress.

Features & Benefits

Hard fescue exhibits well-documented tolerance to drought and heat stress and proven performance with low-input maintenance, as well as good overall turf quality for density and visual merit, helping to maintain good aesthetics in the harshest environments. It will tolerate most stress conditions better than red fescues. Barenbrug has confirmed this with over a decade of research, primarily with *Hardtop* as a test cultivar, which makes up the majority of this blend.

Hard fescue also offers increased Dollar Spot tolerance over all other fine fescues (including Sheep fescue) and a potential reduction in insect damage. It is more tolerant of traffic than Sheep fescue additionally.

New cultivars *Barlegant* and *Beacon* offer unparalleled turf quality parameters for the species in both UK and European trials (BSPB Turfgrass Seed and GEVES Turfgrass List), and *Hardtop* has proven performance in the market. *Mentor* is a listed BSPB variety.

Increasing the proportions of hard fescue in sand-based fairways will assist in sustainable turf management practices of reduced water, nutrient and pesticide inputs.



Greens Tees Fairways Walkways Roughs

How to use it



Sowing rate 20-30g/m² Overseeding rate 10-20g/m² Sowing depth 5-10mm below thatch Mowing height down to 7mm

In the bag

	Bag size 20kg	
Hardtop	45%	Hard fescue
Beacon	25%	Hard fescue
Mentor	20%	Hard fescue
Barlegant	10%	Hard fescue

Find out more at barenbrug.co.uk/sports/products/sgt-all-hard



SGT Fine Fescue

Pure fine fescue blend, utilising our sustainable grass technology (SGT), with cultivars bred to deliver reduced water, fertiliser and chemical inputs.

- SGT technology offers outstanding turf performance with reduced water, fertiliser and chemical inputs
- An innovative mixture of fine fescue species
- Three #1-ranked cultivars for lawn/fairway use
- 50% hard fescue for increased drought tolerance
- High tolerance to Dollar Spot and Red Thread pathogens



Usage

Overseeding, divoting and construction for medium-fine turf on sites with particular drought stress.

Features & benefits

Central to the product is a large proportion of hard fescue, a fine fescue species with well-documented tolerance to drought and heat stress and proven performance with low-input maintenance, as well as good overall turf quality for density and visual merit, helping to maintain good aesthetics in the harshest environments. Hard fescue also offers increased Dollar Spot tolerance and a potential reduction in insect damage.

New cultivars of hard fescue *Barlegant* and *Beacon* offer unparalleled turf quality parameters for the species in both UK and European trials (BSPB Turfgrass Seed and GEVES Turfgrass List).

The mix also includes the new #1-rated slender creeping red fescue *Barnoustie* and #1 Chewings *Nightclub* for added turf quality and density, and *Barrisse*, the #1-ranked strong creeping red fescue cultivar for Red Thread tolerance.

Greens Tees Fairways Walkways Roughs

How to use it



Sowing rate 25-35g/m² Overseeding rate 15-25g/m² Sowing depth 5-10mm below thatch Mowing height down to 7mm

In the bag

	Bag size 20kg	
Barlegant	20%	Hard fescue
Beacon	20%	Hard fescue
Hardtop	10%	Hard fescue
Barnoustie	20%	Slender creeping fescue
Barrisse	20%	Strong creeping red fescue
Nightclub	10%	Chewings red fescue

Find out more at barenbrug.co.uk/sports/products/sgt-fine-fescue

SGT Rye Fairway

Utilising our sustainable grass technology (SGT) delivering grass requiring reduced water, fertiliser and chemical inputs.

- SGT technology offers outstanding turf performance with reduced water and chemical inputs
- Drought and disease tolerance, and superior colour
- *Barprrium* for fine-leaf grass with proven capacity for nitrogen-use efficiency



Usage

Overseeding, divoting and construction of medium-fine turf areas across a range of soil types.

Features & benefits

The "driver" of the mixture is *Barprrium* perennial ryegrass. An outstanding fine-leaved ryegrass with proven capacity for nitrogen-use efficiency; put simply, it requires far less nitrogen (up to 50% less) to deliver equivalent turf performance. It also outperforms other ryegrasses in independent drought trials.

Barprrium is highly ranked with a mean score of 7.4 on Table L1 Turfgrass Seed 2026 and exhibits strong summer colour, another useful characteristic for low-input golf fairways.

The fine fescue cultivars are chosen for their turf performance and sustainability traits also. The new slender creeping red fescue *Barnoustie* is ranked #1 in the 2026 BSPB/STRI Turfgrass Seed booklet for lawn/fairway use, and in trials at Landlab in Italy *Hardtop* hard fescue and *Barjessica* strong creeping red fescue perform particularly well in periods of heat and drought.

The mixture exhibits high disease tolerance in low-input environments. Hard fescue copes well under Dollar Spot pressure, and both *Barnoustie* and *Barjessica* have excellent Red Thread tolerance.

Greens Tees Fairways Walkways Roughs

How to use it



Sowing rate 25-35g/m² Overseeding rate 10-25g/m² Sowing depth 5-10mm below thatch Mowing height down to 10mm

In the bag

	Bag size 20kg	
Barprrium	40%	Perennial ryegrass
Barnoustie	25%	Slender creeping red fescue
Hardtop	20%	Hard fescue
Barjessica	15%	Strong creeping red fescue

Find out more at barenbrug.co.uk/sports/products/sgt-rye-fairway

Ultrafine 30

A 30% perennial ryegrass and red fescue blend for fine turf.

- Contains 30% *Barolympic* which has an outstanding mean score of 8.4 for close-mown turf
- Excellent combination of three red fescue cultivars



Usage

Overseeding and construction of fine turf with moderate wear.

Features & benefits

Barolympic is the market-leading cultivar ryegrass for summer sports use. It is ranked with a score of 8.4 in Table G4 of Turfgrass Seed 2026, comfortably above the next best variety in this close-mown test.

Barolympic is ranked #1 for pale colour and for fineness of leaf in Table G4. This makes it exceptionally easy to blend in with other grass species, such as red fescue or annual meadowgrass.

Barnoustie is the #1-ranked slender creeping red fescue on the market, and *Bodega* and *Barpearl* are long-standing favourites helping to maintain outstanding aesthetics and density in the mixture.

- Greens Tees Fairways Walkways Roughts

How to use it

Sowing rate 25-35g/m ²	Oversowing rate 15-25g/m ²	Sowing depth 8-12mm below thatch	Mowing height down to 4mm

In the bag		Bag size 20kg
<i>Barolympic</i>	30%	Perennial ryegrass
<i>Bodega</i>	30%	Chewings red fescue
<i>Barnoustie</i>	20%	Slender creeping red fescue
<i>Barpearl</i>	20%	Slender creeping red fescue

Find out more at barenbrug.co.uk/sports/products/ultrafine-30

Ultrafine 60

A 60% blend of fine turf perennial ryegrass and red fescue.

- 60% Ultrafine perennial ryegrasses combined with 40% fine red fescues
- *Barolympic* is the stand-out cultivar ryegrass for summer sports use
- *Barpersie* offers new and improved performance



Usage

Designed for the construction or overseeding of medium-fine and fine turf under high wear pressure.

Features & benefits

Barpersie is a relatively new cultivar to Ultrafine products, introduced in 2024, with an enticing combination of wear tolerance, shoot density, visual merit, and leaf fineness. In Table L1 of BSPB Turfgrass Seed 2026 its scores of 8.7 for visual merit and 8.8 for shoot density are unmatched.

Barolympic is the market-leading cultivar ryegrass for summer sports use. It is ranked #1 with a score of 8.4 in Table G4 of Turfgrass Seed 2026, comfortably above the next best variety in this close-mown test.

Barprimum is a recent cultivar from Barenbrug's breeding station in France. It forms a large part of the Sustainable Grass Technology (SGT) concept due to its independently proven drought tolerance, Nitrogen-use efficiency, and disease resistance.

The remainder of the product is made up of highly ranked varieties of red fescue. *Barquess* is the #2-rated slender and *Viktorka* and *Bodega* are top-15 in their respective tables.

- Greens Tees Fairways Walkways Roughts

How to use it

Sowing rate 25-35g/m ²	Oversowing rate 15-25g/m ²	Sowing depth 8-12mm below thatch	Mowing height down to 4mm

In the bag		Bag size 20kg
<i>Barprimum</i>	20%	Perennial ryegrass
<i>Barpersie</i>	20%	Perennial ryegrass
<i>Barolympic</i>	20%	Perennial ryegrass
<i>Barquess</i>	15%	Slender creeping red fescue
<i>Viktorka</i>	15%	Slender creeping red fescue
<i>Bodega</i>	10%	Chewings red fescue

Find out more at barenbrug.co.uk/sports/products/ultrafine-60

Ultrafine 100

A 100% blend of fine turf perennial ryegrass, simply offering the best fine ryegrass product on the market.

- Exceptional fineness of leaf
- *Barolympic* is the stand-out cultivar ryegrass for summer sports use
- *Barprimum* offers sustainability traits such as drought tolerance and nitrogen-use efficiency.



Usage

Overseeding and construction of fine turf with intense wear that demands tolerance to close-mowing. Golf green surrounds, pinch-points and walk-offs are perfect examples of where this product comes into its own.

Features & Benefits

Barpersie is a relatively new cultivar to Ultrafine products, introduced in 2024, with an enticing combination of wear tolerance, shoot density, visual merit, and leaf fineness. In Table L1 of BSPB Turfgrass Seed 2026 its scores of 8.7 for visual merit and 8.8 for shoot density are unmatched.

Barolympic is the market-leading cultivar ryegrass for summer sports use. It is ranked #1 with a score of 8.4 in Table G4 of Turfgrass Seed 2026, comfortably above the next best variety in this close-mown test.

Barprimum is a recent cultivar from Barenbrug's breeding station in France. It forms a large part of the Sustainable Grass Technology (SGT) concept due to its independently proven drought tolerance, Nitrogen-use efficiency, and disease resistance.

ULTRAFINE 100 truly offers unparalleled performance for perennial ryegrass under close-mowing.

- Greens Tees Fairways Walkways Roughts

How to use it

Sowing rate 25-50g/m ²	Oversowing rate 20-30g/m ²	Sowing depth 10-15mm below thatch	Mowing height down to 4mm

In the bag		Bag size 20kg
<i>Barprimum</i>	40%	Perennial ryegrass
<i>Barolympic</i>	30%	Perennial ryegrass
<i>Barpersie</i>	30%	Perennial ryegrass

Find out more at barenbrug.co.uk/sports/products/ultrafine-100



Ultrafine

Extreme

Barenbrug's go-to blend of fine perennial ryegrasses, for all-purpose use in areas requiring medium-fine turf, close-mowing and high wear.

- 100% perennial ryegrass
- Most popular Barenbrug summer sports product



Usage

Overseeding, divoting and construction of medium-fine turf with intense wear.

Features & benefits

All four Barenbrug-bred cultivars bring advantages and different characteristics to this product.

Barzico is an elite cultivar for medium-fine turf under wear traffic. It is ranked #3 in Table S1 and within the top third on L1 in BSPB Turfgrass Seed 2026.

Barpersie is a recent addition to EXTREME. A high performing, all-round cultivar. Ranked #9 in Table S1 and #2 in Table L1 in BSPB Turfgrass Seed 2026, this new cultivar combines exceptional wear tolerance and recovery with fineness of leaf and density; its mean score of 8.9 as a new cultivar in Table G4 is groundbreaking.

Baradona offers outstanding all-round wear tolerance, shoot density, and aesthetics. With a mean score 7.4 in Tables S1 and L1 of Turfgrass Seed 2026, it is one of the few cultivars to hold top-30 rankings in both lists.

Barprrium is an exceptional ryegrass for summer sports use. Its use in both Ultrafine and SGT products shows its versatility in turf management.

If fineness of leaf or tolerance to very close mowing are the driving factors in product selection, ULTRAFINE 100 is recommended as a possible alternative.

- Greens Tees Fairways Walkways Roughs

How to use it

Sowing rate 25-50g/m ²	Oversowing rate 20-30g/m ²	Sowing depth 10-15mm below thatch	Mowing height down to 5mm

In the bag	Bag size 20kg	
<i>Barzico</i>	40%	Perennial ryegrass
<i>Barprrium</i>	30%	Perennial ryegrass
<i>Baradona</i>	15%	Perennial ryegrass
<i>Barpersie</i>	15%	Perennial ryegrass

Find out more at barenbrug.co.uk/sports/products/extreme



RPR Golf

Using Barenbrug's RPR (Regenerating Perennial Ryegrass) technology for fast establishment and unparalleled capacity for recovery from wear due to the self-regenerating growth habit.

- Barenbrug-bred regenerating ryegrass technology (RPR)
- Exceptional wear tolerance and fast recovery
- Combines new RPR *Barpropel* with Ultrafine cultivars



Usage

Overseeding, divoting and construction of golf turf with intense wear.

Features & benefits

The unique component of RPR GOLF is *Barpropel*, a **Regenerating Perennial Ryegrass (RPR)**. *Barpropel* is the latest generation of RPR, with finer leaf texture and enhanced wear tolerance.

RPR is a group of cultivars bred from Barenbrug's grass breeding stations that delivers unparalleled recovery from wear and a naturally self-regenerating growth habit. It produces determinate stolons (a stem that grows along the ground surface as it establishes and grows as shown in Fig. 1), resulting in solid ground cover and unparalleled capacity for recovery after and during wear.

Barprrium is an exceptional ryegrass for summer sports use. It is ranked very highly in both G4 and L1 tables of BSPB Turfgrass Seed 2026.

Barpersie is a true all-rounder, ranking #9 in Table S1, #2 in Table L1 and provisionally #1 (new cultivar) in Table G4 of BSPB Turfgrass Seed 2026. Both *Barpersie* and *Barprrium* are part of our ULTRAFINE group of fine leaf perennial ryegrasses.

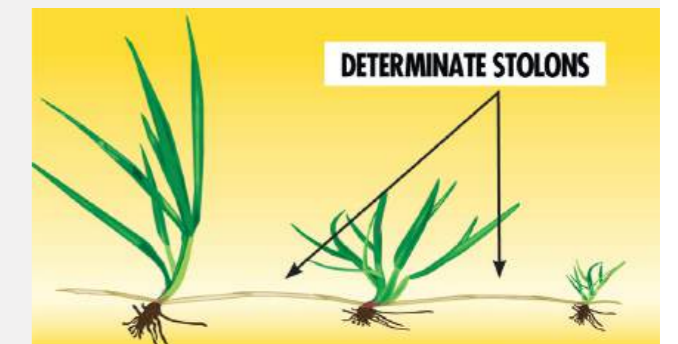


Figure 1 - Schematic diagram of determinate stolons in RPR.

Visit page 11 for further details on RPR innovation and research.



- Greens Tees Fairways Walkways Roughs

How to use it

Sowing rate 25-50g/m ²	Oversowing rate 20-30g/m ²	Sowing depth 10-15mm below thatch	Mowing height down to 12mm

In the bag	Bag size 20kg	
<i>Barpropel</i>	40%	RPR Perennial ryegrass
<i>Barprrium</i>	40%	Perennial ryegrass
<i>Barpersie</i>	20%	Perennial ryegrass

Find out more at barenbrug.co.uk/sports/products/rpr-golf

"Our ongoing supplier agreement with Barenbrug for grass seed is valued. We always strive for the best, and the quality of product and support we receive is second to none in my opinion."

Endurance is the defining quality of the Old Course, and often of its players. Nearly 500 years on, it welcomes 50,000 rounds annually, together with a constant stream of caddies, and (literally) every man and his dog walking over the public ground on a normal Sunday.

Tournament golf is never far away from the Old Course either. Host to the Open Championship for the 30th time in 2022, the Walker Cup matches for the ninth time in 2023 (100 years on from their second playing), and the Old Course welcomed the best female golfers in the world for the Women's Open for the third time in 2024.

The hallowed turf may feel as if it has been there forever but is under a regime of constant maintenance and inevitable replacement, by means of divot fill and overseeding. For almost thirty years, St Andrews Links Trust has used Barenbrug grass seed for this essential work.

Today, products such as Fescue, SGT Fine Fescue, and Ultrafine products are key to keeping the Old Course in excellent year-round condition. In addition to the Old Course, St Andrews Links Trust manages the New, Jubilee, Eden, Strathtyrum and Balgove courses as well as the Castle Course, sown out with Barenbrug seed and opened in 2008.

Sandy Reid, Director of Greenkeeping, commented, **"Our ongoing supplier agreement with Barenbrug for grass seed is valued. We always strive for the best, and the quality of product and support we receive is second to none in my opinion."**



Football & Rugby

The products and the support to tackle the toughest opponents on the pitch.

The challenge of maintaining a fine quality surface under acute wear through the winter is answered with highly developed cultivars and blends.

Whether the period is eighty minutes or ninety, the fury of the game is the same. That intensity is transferred all too directly to the playing surface, but also, believe it or not, to the laboratory.

At Barenbrug's breeding stations, ongoing research, breeding and trialling for new varieties and blends is aimed squarely at providing you with the top scoring cultivars to enhance your pitch.

Look out for new, high performing cultivars for winter sports pitches, including *Bargkamp* and *Altivo* - the #4 and #5 ranked perennial ryegrass cultivars from the BSPB/STRI Turfgrass Seed 2026 booklet S1 Table.



INTRODUCTION

TECHNOLOGY GROUPS

GOLF

FOOTBALL & RUGBY

CRICKET & TENNIS

RACING & EQUESTRIAN

TECHNICAL & SUPPORT

Elite Sport

The market-leading grass seed product, for premium sport stadiums and pitches, with the top performing grass cultivars on the market.

- High performance blend with mixture score of 7.98
- Containing four of the top-6 ranked cultivars: *Barzico* #3, *Bargkamp* #4, *Altivo* #5, *Barbasten* #6
- Four Barenbrug-bred cultivars with strong all-round disease tolerance
- Maximum wear tolerance and early spring growth for recovery



Designed for premier pitches



Top visual merit



High disease tolerance



No. 1 rated mixture

Usage

Designed for elite winter sport stadiums and pitches, ELITE SPORT focuses on the key characteristics of wear tolerance, recovery, camera-friendly grass colour and disease resistance. ELITE SPORT is changing the game for the renovation and construction of stadium and other high-quality pitches.

Top performing varieties

Barenbrug's ELITE SPORT product has been re-formulated for 2026 to include four of the top-6 cultivars in BSPB Turfgrass Seed 2026, including the new *Bargkamp* for the first time.

Barzico holds the #3 position, trialled under winter sports wear simulation at 25mm height of cut. The cultivar originates from Barenbrug's Dutch breeding station and is a very strong all-round ryegrass suitable for many applications. Visually, it is mid-fine, extremely dense with a medium green colour.

New for 2026 is the inclusion of the #4 ranked cultivar, *Bargkamp*. The inclusion of *Bargkamp* lifts the overall mixture score over last year's mixture. *Bargkamp* exhibits an excellent range of desirable traits, including high shoot density and recovery thanks to its strong spring growth.

Altivo, ranked #5, was launched in 2024 and possesses a broad range of beneficial traits. Early spring growth and high recovery are of particular note.

Barbasten is ranked #6. It is a true winter sports cultivar from Holland, coarser in the leaf, paler green and exceptionally active in winter/spring recovery. *Barbasten* brings additional *Drechslera* leaf spot tolerance to the product.

Features & benefits

Every elite squad should have the perfect combination of characteristics. Our ELITE SPORT seed mix blends four of the toughest, most hardwearing perennial ryegrasses into a top performing team.

High wear tolerance and recovery

The mixture is formulated primarily on performance in the BSPB Turfgrass Seed 2026 booklet Table S1 for sports pitch wear simulation. ELITE SPORT boasts the UK's highest 'mixture score' of 7.98.

Desirable traits

ELITE SPORT combines cultivars that go beyond wear tolerance alone. *Barbasten* brings additional *Drechslera* leaf spot tolerance to the blend and *Barzico* combines highly-rated visual merit and wear tolerance. *Altivo* and *Bargkamp* both exhibit early spring growth – an essential trait for achieving strong recovery.

How to use it



Sowing rate
30-50g/m²



Oversowing rate
15-30g/m²



Sowing depth
10-15mm below thatch



Mowing height
down to 18mm

In the bag	Bag size 20kg	
<i>Barzico</i>	35%	Perennial ryegrass
<i>Barbasten</i>	30%	Perennial ryegrass
<i>Bargkamp</i>	20%	Perennial ryegrass
<i>Altivo</i>	15%	Perennial ryegrass

Find out more at barenbrug.co.uk/sports/products/elite-sport

Elite Defence

An innovative winter sports grass seed product, designed to deliver disease tolerance without compromise in performance, specifically for the needs and environments of premier sport stadiums.

- Proven high disease tolerance to Grey Leaf Spot (GLS) – *Amiata*, *Barprrium* and *Barorlando*
- Increased tolerance to *Drechslera* Leaf Spot and Brown Patch *Rhizoctonia*
- High performance and wear tolerance with top-ranked cultivars *Barzico* #3 and *Barbasten* #6 BSPB Turfgrass Seed
- All European-bred Barenbrug diploid cultivars for superior UK winter performance
- *Amiata*, *Barprrium* and *Barorlando* have darker genetic colour for a rich green appearance, desirable on fully renovated stadium pitches



Usage

ELITE DEFENCE is formulated for the specific needs of elite winter sport stadiums, delivering exceptional and proven disease tolerance against Grey Leaf Spot (GLS), *Drechslera* Leaf Spot and Brown Patch *Rhizoctonia* without compromise in wear tolerance and overall performance.

Disease tolerance

More detailed information is given on page 6.

Grey Leaf Spot (GLS)

As part of a major cultivar screening programme undertaken in Europe by Barenbrug breeders, *Amiata*, *Barprrium* and *Barorlando* have been identified as being highly tolerant to the damaging disease Grey Leaf Spot (GLS), caused by *Pyricularia grisea* or *P. oryzae* (see Fig. 1). These three cultivars are all bred by Barenbrug in France and are wear-tolerant diploid cultivars.

Drechslera Leaf Spot

Drechslera Leaf Spot is a very common disease affecting stadium pitches in winter, proliferating in cool, damp and shaded conditions. Independent trials, including BSPB in UK and GEVES across several European countries, have highlighted *Barprrium* and *Barbasten* as being particularly tolerant against this pathogen. Data is provided on page 7.

Rhizoctonia Brown Patch

A less common disease issue in the UK, Brown Patch can be a problem during a hot and humid renovation period. Internal Barenbrug trials have shown *Barprrium* and *Barorlando* will offer good protection against this disease.

Top performing cultivars

Disease tolerance is only one aspect of ELITE DEFENCE. Crucially, the performance and wear tolerance of the five cultivars in UK winter sports conditions is also very strong. Central to this is the utilisation of only European-bred diploid cultivars, which offer far better wear tolerance than tetraploid or American-bred grasses.

Barzico holds the #3 position in BSPB Turfgrass Seed Table S1, trialled under winter sports wear simulation at 25mm height of cut. *Barbasten* is ranked #6 in the same trials. Both cultivars are bred in Holland and have later heading

characteristics, which make them exceptionally active in winter/spring recovery.

Barorlando is itself a former #1 in BSPB trials, and performs very well in wear trials across Europe. *Amiata* and *Barprrium* have both been trialled in the UK. Although *Barprrium* performs less well in Bingley, it topped internal Barenbrug trials at Cropvale in Worcestershire. *Amiata* returned above average scores in UK trials. *Barorlando*, *Amiata* and *Barprrium* originate in France, and are generally earlier in their heading dates. Five cultivars, with diverse genetic backgrounds, provides excellent mixture synergy overall.

Camera-friendly colour

Another significant benefit of ELITE DEFENCE over other market options is a strong mid-green genetic colour. *Barorlando*, *Amiata* and *Barprrium* all offer benefits on this front, with impressive colour scores of 7.2, 6.2, and 6.9, respectively in BSPB S1 trials. Combined with their disease tolerance, this promises excellent visual aesthetics throughout the season for HD TV cameras.



Figure 1

How to use it



Sowing rate
30-50g/m²



Oversowing rate
15-30g/m²



Sowing depth
10-15mm below thatch



Mowing height
down to 18mm

In the bag	Bag size 20kg	
<i>Barzico</i>	20%	Perennial ryegrass
<i>Barbasten</i>	20%	Perennial ryegrass
<i>Barprrium</i>	20%	Perennial ryegrass
<i>Amiata</i>	20%	Perennial ryegrass
<i>Barorlando</i>	20%	Perennial ryegrass

Find out more at barenbrug.co.uk/sports/products/elite-defence

RPR Sport

Recovery time is the real measure of fitness. This mix regenerates to keep your pitch looking its best all season long.

- Barenbrug-bred RPR technology for fast establishment and unparalleled capacity for recovery from wear
- Tried and tested at our research station focused on four key traits for high performance pitches
- 100% perennial ryegrass for areas of intensive traffic
- Barenbrug-bred cultivars only



Regenerating long-term pitches

Usage

Wear is inevitable, and for some that means a complete annual renovation, but if that is not possible or is undesirable, RPR SPORT can help. Its unique blend of regenerating perennial ryegrasses copes with high use to maintain the playing surface throughout the year.

Features & benefits

The unique component of RPR SPORT is *Barpropel*, a **Regenerating Perennial Ryegrass (RPR)**, the result of detailed research and trials, which produces determinate stolons, resulting in excellent ground cover with unparalleled capacity for recovery.

RPR SPORT is further enhanced for 2026 with the highly rated *Barzico* (#3-ranked BSPB) and brand-new to the market *Bargkamp* (ranked #4), which add exceptional wear tolerance.

Baradona is a tried and trusted cultivar, delivering high wear tolerance and shoot density to the mixture.

Visit page 11 for further details on RPR innovation and research.

How to use it



Sowing rate
30-50g/m²



Oversowing rate
15-30g/m²



Sowing depth
10-15mm below thatch



Mowing height
down to 18mm

In the bag Bag size 20kg

<i>Barpropel</i>	40%	RPR Perennial ryegrass
<i>Barzico</i>	30%	Perennial ryegrass
<i>Bargkamp</i>	15%	Perennial ryegrass
<i>Baradona</i>	15%	Perennial ryegrass

Find out more at barenbrug.co.uk/sports/products/rpr-sport

Multi Sport

Our all-purpose sport field mixture. When your fields are mixed use, we don't think you should have to compromise on seed mix quality.

- Includes two of the top-6 ranked ryegrasses in BSPB Table S1
- 100% Barenbrug-bred cultivars from our European breeding programmes
- Excellent speed of establishment and recovery from winter wear
- Utilises cultivars that perform well in both S1 (Sport: 25mm with wear) and L1 (Lawn: 10-15mm) BSPB trials



All-round sport use

Usage

The ultimate all-rounder, ideally suited for multi-use sports pitches such as winter sports pitches that are then used for cricket outfield through the summer, sport fields, grounds and pitches.

Features & benefits

Altivo, and *Barbasten* are rated #5 & #6 in BSPB Turfgrass Seed for winter sports pitches under wear. They also feature in our market-leading winter sports blend ELITE SPORT. Their proven hard-wearing performance gives you the confidence that your pitches will be sustained throughout the season.

Barcristalla is a proven, all-round high performing cultivar. But where it differs is that it combines dark green genetic colour and high wear tolerance, giving this blend a deep green colour.

All four cultivars are selected for excellent performance on both BSPB Turfgrass Seed tables S1 and L1, demonstrating the adaptability for multiple use sports fields and variable seasonal mowing heights.

MULTI SPORT is also formulated to utilise a high proportion of seed produced here in the UK – reducing the carbon footprint of delivering this product to market.

How to use it



Sowing rate
30-50g/m²



Oversowing rate
15-30g/m²



Sowing depth
10-15mm below thatch



Mowing height
down to 10mm

In the bag Bag size 20kg

<i>Barcristalla</i>	30%	Perennial ryegrass
<i>Barbasten</i>	25%	Perennial ryegrass
<i>Baromario</i>	25%	Perennial ryegrass
<i>Altivo</i>	20%	Perennial ryegrass

Find out more at barenbrug.co.uk/sports/products/multi-sport



SOS

The ground team's emergency service. SOS gives fast germination to repair worn or damaged surfaces in the coldest months.

- Purpose-bred cultivars, designed for emergency repair of winter sports pitches
- Fast germination, establishment and growth
- Overseeding and patching blend of ryegrass species that germinate and grow vigorously at very low temperatures



Overseeding

Usage

Designed for emergency mid-season turf repair, aiming for the fastest possible germination, establishment and growth in cool temperatures.

Features & benefits

The saviour of the winter season, this specially formulated product contains cultivars that germinate and establish quickly to resurrect high traffic areas on any pitch. *Barterra* is an annual ryegrass that will germinate as low as 3.5°, quicker and at lower temperatures than perennial ryegrass, including tetraploid cultivars.

Baradona provides a longer-term solution with good performance characteristics. *Baradona* is a particularly wear tolerant cultivar with strong low temperature germination and growth.

Visit page 10 for further information on SOS

How to use it



Sowing rate
30-50g/m²



Oversowing rate
20-40g/m²



Sowing depth
4-8mm below thatch



Mowing height
down to 20mm

In the bag Bag size 20kg

<i>Barterra</i>	50%	Annual ryegrass
<i>Baradona</i>	50%	Perennial ryegrass

Find out more at barenbrug.co.uk/sports/products/sos

Barenbrug & Watford FC

Meeting the standards of modern groundsmanship at Watford Football Club.

Scott Tingley, Grounds Manager at Watford FC relies on Barenbrug's Elite Sport to deliver the performance, resilience, and presentation demanded in today's stadium environments.

"Elite Sport has been a key part of our programme for many years thanks to its exceptional traits — strong wear tolerance, and excellent recovery whilst providing standout aesthetics in the stadium befitting of this era of Groundsmanship and the standards now expected of Watford Football Club."

"Elite Sport has been a key part of our programme for many years thanks to its exceptional traits."

Cricket & Tennis

Highly refined blends to meet the tests of the British summer's sports.

Aside from the intense wear to which summer sports surfaces are subject, the unpredictability of the British weather adds an extra dimension.

Managing fine lawns and squares with close-mowing regimes heightens the risk of material damage through intense traffic and increasingly through drought - a more widespread feature of summers.

Through ongoing research at Barenbrug's breeding stations, we are investing in future blends to help maintain the quality of the cricket pitches and lawn tennis courts for which the nation is world famous.

Look out for *Barolympic*, *Barpersie* and *Barzico*, three stand-out varieties in the BSPB/STRI Turfgrass Seed 2026 booklet that underpin our grass products for summer sports.

Extreme

Barenbrug's go-to blend of fine perennial ryegrasses, for all-purpose use in areas requiring medium-fine turf, close-mowing and high wear – ideally suited to all levels of cricket squares.

- 100% perennial ryegrass for use in multi-purpose sport areas
- Formulated to withstand the high demands of cricket squares, tennis and other high impact areas
- Fast establishment
- Most popular Barenbrug product for summer sports



Usage

Designed to create the perfect, lasting surface for cricket squares and outfield, when overseeding, divoting and constructing. Producing a medium-fine turf for intensive wear and good tolerance of close-mowing regimes.

Features and benefits

Cricket squares and outfield, tennis courts and high-traffic lawns are perfect examples of where this grass seed mix is at home.

All four Barenbrug-bred cultivars bring advantages and different characteristics to this product.

Barzico is an elite cultivar for medium-fine turf under wear traffic. It is ranked #3 in Table S1 and within the top third on L1 in BSPB Turfgrass Seed 2026. It was #1-ranked in a recent Barenbrug cricket trial at Loughborough University (see picture below).

Barpersie is a recent addition to EXTREME. A high performing, all-round cultivar. Ranked #9 in Table S1 and #2 in Table L1 in BSPB Turfgrass Seed 2026. This new cultivar combines exceptional wear tolerance and recovery with fineness of leaf and density; its mean score of 8.9 as a new cultivar in Table G4 is groundbreaking.

Baradona offers outstanding all-round wear tolerance, shoot density, and aesthetics. With a mean score 7.4 in Tables S1 and L1 of Turfgrass Seed 2026, it is one of the few cultivars to hold top-30 rankings in both lists.

Barprimum is an exceptional ryegrass for summer sports use. Its use in both Ultrafine and SGT products shows its versatility in turf management.

If fineness of leaf or tolerance to very close mowing are the driving factors in product selection, ULTRAFINE 100 is recommended as a possible alternative.



Barenbrug trials run at Loughborough University.

How to use it



Sowing rate
25-50g/m²



Oversowing rate
20-30g/m²



Sowing depth
4-8mm below thatch



Mowing height
down to 2mm
(Cricket squares)

In the bag	Bag size 20kg	
<i>Barzico</i>	40%	Perennial ryegrass
<i>Barprimum</i>	30%	Perennial ryegrass
<i>Baradona</i>	15%	Perennial ryegrass
<i>Barpersie</i>	15%	Perennial ryegrass

Find out more at barenbrug.co.uk/sports/products/extreme

Ultrafine 60

A 60% blend of fine turf perennial ryegrass and red fescue for free-draining cricket outfield.

- 60% ultrafine perennial ryegrasses combined with 40% fine red fescues
- *Barolympic* is the stand-out cultivar ryegrass for summer sports use
- *Barpersie* offers new and improved performance



Usage

Designed for the construction or overseeding of cricket outfield.

Features and benefits

Barpersie is a relatively new cultivar to Ultrafine products, introduced in 2024, with an enticing combination of wear tolerance, shoot density, visual merit, and leaf fineness. In Table L1 of BSPB Turfgrass Seed 2026 its scores of 8.7 for visual merit and 8.8 for shoot density are unmatched.

Barolympic is the market-leading cultivar ryegrass for summer sports use. It is ranked #1 with a score of 8.4 in Table G4 of Turfgrass Seed 2026, comfortably above the next best cultivar in this close-mown test.

Barprimum is a recent cultivar from Barenbrug's breeding station in France. It forms a large part of the Sustainable Grass Technology (SGT) concept due to its independently proven drought tolerance, Nitrogen-use efficiency, and disease resistance.

The remainder of the product is made up of highly ranked cultivars of red fescue. *Barquess* is the #2-rated slender and *Viktorka* and *Bodega* are top-15 in their respective tables.

How to use it



Sowing rate
20-30g/m²



Oversowing rate
10-20g/m²



Sowing depth
rootzone contact



Mowing height
down to 4mm

In the bag	Bag size 20kg	
<i>Barprimum</i>	20%	Perennial ryegrass
<i>Barpersie</i>	20%	Perennial ryegrass
<i>Barolympic</i>	20%	Perennial ryegrass
<i>Barquess</i>	15%	Slender creeping red fescue
<i>Viktorka</i>	15%	Slender creeping red fescue
<i>Bodega</i>	10%	Chewings red fescue

Find out more at barenbrug.co.uk/sports/products/ultrafine-60

Ultrafine 100

A 100% blend of fine turf perennial ryegrass, simply offering the best fine ryegrass product on the market.

- Exceptional fineness of leaf
- *Barolympic* is the stand-out cultivar ryegrass for summer sports use
- *Barprimum* offers sustainability traits such as drought tolerance and nitrogen-use efficiency



Usage

Overseeding and construction of fine turf with intense wear that demands tolerance to close-mowing. Tennis courts and cricket pitches are perfect examples of where this grass seed product comes into its own.

Features and benefits

Barpersie is a relatively new cultivar to Ultrafine products, introduced in 2024, with an enticing combination of wear tolerance, shoot density, visual merit, and leaf fineness. In Table L1 of BSPB Turfgrass Seed 2026 its scores of 8.7 for visual merit and 8.8 for shoot density are unmatched.

Barolympic is the market-leading cultivar ryegrass for summer sports use. It is ranked #1 with a score of 8.4 in Table G4 of Turfgrass Seed 2026, comfortably above the next best cultivar in this close-mown test.

Barprimum is a recent cultivar from Barenbrug's breeding station in France. It forms a large part of the Sustainable Grass Technology (SGT) concept due to its independently proven drought tolerance, Nitrogen-use efficiency, and disease resistance.

ULTRAFINE 100 truly offers unparalleled performance for perennial ryegrass under close-mowing.

How to use it



Sowing rate
25-50g/m²



Oversowing rate
20-30g/m²



Sowing depth
10-15mm



Mowing height
down to 2mm
(Cricket squares)

In the bag	Bag size 20kg	
<i>Barprimum</i>	40%	Perennial ryegrass
<i>Barpersie</i>	30%	Perennial ryegrass
<i>Barolympic</i>	30%	Perennial ryegrass

Find out more at barenbrug.co.uk/sports/products/ultrafine-100

“Professionals produce three months of wear in one week. Starting with Becker, pro tennis players have steadily got bigger and stronger which really chews the courts up.”

Crowned Courts - The Queen's Club chooses Barenbrug Ultrafine to maintain a surface fit for its members and the annual visit of tennis royalty.

Among the more exclusive of London's sporting clubs, the Queen's Club counts among its members many tennis greats, members of the royal family, and business leaders. It is held in high regard by touring players for its perfectly maintained courts.

Graham Kimpton is Grounds Manager, where he took over the reins in 2010 from his father, David Kimpton. Graham's family association with Groundsmanship is impressive. His uncle Peter worked at the nearby Hurlingham Club for 50 years, his father worked at Queen's for 43 years and his cousin Adam Tester is Grounds Manager at The University of Leicester. With Graham's eldest son, Sam, now working at Queen's, he becomes the third generation of the Kimpton family to tend to the famous West London grass courts - all 12 of them.

The big challenge for court management is coping with the wear during and after the big tournaments. "Professionals produce three months of wear in one week," reflects a stoical Graham Kimpton, second generation Grounds Manager. "Starting with Becker (coincidentally a member of the club), pro tennis players have steadily got bigger and stronger which really chews the courts up."

The answer to heavy wear is to have strong turf that recovers quickly. It's important because maintaining the courts is a balancing act. Whatever happens, the grounds team must provide a championship quality surface for the annual summer tournament and accommodate the year-round needs of the members.

Barenbrug grass was originally the choice of Graham's father, the former Grounds Manager at Queen's. The tennis courts at Queen's are unusual as they are composed of a blend of bent, fescue and perennial ryegrass.

The courts at The Queen's Club are oversown twice per year, with two different mixtures:

Spring mixture – 100% ryegrass | Autumn mixture – ryegrass, bent and fescue

Graham maintains the bent and fescue population in the courts to boost the sward density. Although the courts are predominantly perennial ryegrass, Graham feels the bent and fescue help to 'fill the gaps' in the sward, helping to create a tight barrier to reduce *Poa* ingressions.

In his time at The Queen's Club Graham says there have been many advancements that have contributed to improving the standards of the surfaces including improvements in machinery, particularly aeration and scarification equipment, as well as developments in grass breeding from Barenbrug.

“We have used Barenbrug for over 15 years. I feel they offer the best out there, they give me good service and are always pushing the boundaries to create improved varieties”

Taken together, these tennis court mixes have all the properties that make it a high-quality playing surface fit for a first-class tournament.



Racing & Equestrian

Carefully created products meet the challenges of the course, from the heavy going to the good.

The range of soil types and climates, and the different challenges of flat and national hunt racing together, demand carefully balanced products to maintain the going year-round.

Barenbrug's research and development is directed toward blends that respond to current sporting needs, based on close working relationships with course owners and turf management professionals.

Our range offers two products to maintain a good track and provide rapid repair when the damage is severe.



RPR Sprint

A blend of fast-growing perennial ryegrasses, formulated specifically for the demands of racecourses.

- Barenbrug-bred Regenerating Perennial Ryegrass technology (RPR)
- Exceptional wear tolerance, unparalleled capacity for recovery
- Fast-growing blend
- Broad-leafed and thrives on mowing heights > 60mm



Usage

Construction, divoting and overseeding of racecourses.

Features & benefits

Designed to give you the wear tolerance and recovery needed either for flat or national hunt racing circuits. Key to the product's unique recovery ability is *Barlibro*, a **Regenerating Perennial Ryegrass (RPR)** that produces determinate stolons (a stem that grows along the ground surface as it establishes and grows), resulting in solid ground cover and unparalleled capacity for recovery.

A major difference between equestrian surfaces and other sports is the mowing height. Industry trials mow grasses at 4-7mm, 10-15mm and 25mm, which is of little practical use to racecourse grounds managers. RPR SPRINT is designed to be maintained at 60mm+ height of cut, which allows broader-leafed and faster growing cultivars to be utilised. RPR SPRINT includes the agricultural grass variety, *Strangford*, a perennial ryegrass, with excellent sward density and persistency. Fast-growing and highly wear tolerant winter sports cultivars *Barorlando* and *Barcristalla* are also in the blend.

Visit page 11 for further details about RPR.

How to use it



Sowing rate
25-35g/m²



Oversowing rate
15-25g/m²



Sowing depth
10-15mm below thatch



Mowing height
down to 60mm

In the bag

Bag size 20kg

Barlibro	40%	RPR Perennial ryegrass
Barorlando	25%	Perennial ryegrass
Barcristalla	20%	Perennial ryegrass
Strangford	15%	Perennial ryegrass

Find out more at barenbrug.co.uk/sports/products/rpr-sprint

SOS

SOS gives fast germination to repair worn or damaged surfaces in the coldest months.

- Purpose-bred cultivars, designed for emergency repair during winter months
- Fast germination, establishment and growth
- Overseeding and patching blend of ryegrass species that germinate and grow vigorously at very low temperatures



Usage

Designed for emergency mid-season turf repair, aiming for the fastest possible germination, establishment and growth in cool temperatures.

Features & benefits

The saviour of the winter season, this specially formulated product contains cultivars that germinate and establish quickly to resurrect high traffic areas on any racecourse. *Barterra* is an annual ryegrass that will germinate as low as 3.5°, quicker and at lower temperatures than perennial ryegrass, including tetraploid cultivars.

Baradona provides a longer-term solution with good performance characteristics. *Baradona* is a particularly wear tolerant cultivar with strong low temperature germination and growth.

Visit page 10 for further details on SOS.

How to use it



Oversowing rate
20-40g/m²



Sowing depth
4-8mm below thatch



Mowing height
down to 20mm

In the bag

Bag size 20kg

Barterra	50%	Annual ryegrass
Baradona	50%	Perennial ryegrass

Find out more at barenbrug.co.uk/sports/products/sos

Turf Grass Identification



PERENNIAL RYEGRASS
Lolium perenne



SMOOTH-STALKED MEADOWGRASS
Poa pratensis



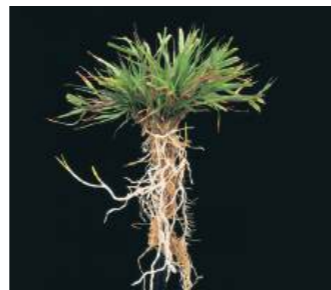
SLENDER CREEPING RED FESCUE
Festuca rubra litoralis



STRONG CREEPING RED FESCUE
Festuca rubra rubra



CHEWINGS RED FESCUE
Festuca rubra commutata



BROWNTOP BENT
Agrostis capillaris



CREEPING BENT
Agrostis stolonifera



HARD FESCUE
Festuca brevipila



TALL FESCUE
Festuca arundinacea



TUFTED HAIRGRASS
Deschampsia caespitosa



CRESTED HAIRGRASS
Koeleria macrantha



ANNUAL MEADOWGRASS
Poa annua

Guide to Species Characteristics

SPECIES	SOIL CONDITIONS				MAINTENANCE						
	Seeds per gram (g)	Optimal pH range	Humidity	Salt tolerance	Maintenance level	Fast establishment	Rhizomes / Stolens / Tufted	Shade tolerance	Nitrogen requirement	Water requirement	Thatch build-up
<i>Agrostis capillaris</i> Browntop bent	14,000	5.6 -7.0	Medium	Moderate	Medium	Poor	R	Good	Medium	Medium	High
<i>Agrostis stolonifera</i> Creeping bent	16,000	5.6 -7.0	High	Good	Intensive	Poor	S	Average	Very high	High	Very high
<i>Festuca rubra rubra</i> Strong creeping red fescue	1,000	5.5 -6.8	Low	Weak	Low	Average	R	Very good	Low	Low	Medium
<i>Festuca rubra commutata</i> Chewings red fescue	1,000	5.5 -6.8	Low	Weak	Low	Average	T	Good	Low	Low/medium	High
<i>Festuca rubra litoralis</i> Slender creeping red fescue	1,000	5.5 -6.8	Low	Good	Low	Average	R	Good	Low	Low	High
<i>Festuca ovina</i> Sheep fescue	1,600	4.5 -5.8	Very low	Weak	Very low	Average	T	Good	Very low	Low/very low	Low
<i>Festuca brevipila</i> Hard fescue	1,300	4.5 -7.5	Very low	Good	Very low	Average	T	Very good	Very low	Low/very low	Low
Rhizomatous Tall Fescue (RTF)	400	5.5 -7.0	High	Good	Medium	Average	R	Very good	Medium	Very low	Low
<i>Festuca arundinacea</i> Tall fescue	450	5.5 -7.0	High	Good	Medium	Average	T	Very good	Medium	Very low	Low
<i>Lolium perenne</i> Perennial ryegrass	700	5.8 -7.4	Medium	Medium	Medium	Good	T	Poor	High	Medium	Low
<i>Poa pratensis</i> Smooth-stalked meadowgrass	3,300	5.8 -7.5	Medium	Weak	Medium	Poor	R	Poor	High	Medium	Medium
<i>Poa trivialis</i> Rough-stalked meadowgrass	5,500	5.8 -7.2	High	Weak	Medium	Average	S	Good	High	High	Medium
<i>Poa annua</i> Annual meadowgrass	6,500	5.5 -7.5	High	Weak	Intensive	Average	T	Very good	High	High	Medium
<i>Koeleria macrantha</i> Crested hairgrass	3,000	5.5 -8.0	Low	Good	Very low	Average	R	Good	Very low	Low/very low	Very low
<i>Deschampsia caespitosa</i> Tufted hairgrass	3,800	5.5 -6.5	High	Medium	Low	Good	T	Excellent	Medium	High	High

Sowing and Seeding Rates

SOWING RATES - KILOGRAMS (KG) REQUIRED

STANDARD AREAS	5g/m ² 20g/m ² 35g/m ²		
	4,050m ²	10,800m ²	6,900m ²
Football	-	80	150
Football	-	225	375
Rugby	-	150	225
Tennis	-	5.5	10
Cricket	-	10.5	18
Bowls	8	32	56
Golf	2.5	10	17.5

AREA COVERAGE

SEED RATES (per 20kg bag)	COVERAGE
5g/m ²	4,000m ²
10g/m ²	2,000m ²
15g/m ²	1,333m ²
20g/m ²	1,000m ²
25g/m ²	800m ²
30g/m ²	666m ²
35g/m ²	571m ²

Our Partners & Approved Distributors



AGROVISTA

📞 0115 939 0202 ✉️ enquiries@agrovista.co.uk 🌐 agrovista.co.uk
📍 Rutherford House, Nottingham Science and Technology Park, University Boulevard, Nottingham NG7 2PZ



A T BONE & SONS LTD

📞 01707 642178 ✉️ contact@atbone.co.uk 🌐 atbone.co.uk
📍 Clements Farm, Brickendon Lane, Hertford SG13 8NS



AVONCROP AMENITY PRODUCTS LTD

📞 01344 891730 ✉️ sales@avoncrop-amenity.com 🌐 avoncrop-amenity.com
📍 1 Millside Park, Crouch Lane, Winkfield, Berkshire SL4 4PX



BOURNE AMENITY

📞 01797 252299 ✉️ info@bourneamenity.co.uk 🌐 bourneamenity.co.uk
📍 The Wharf, Rye Road, Newenden, Kent TN18 5QG



COLLIER TURF CARE

📞 01328 700600 ✉️ sales@collier-turf-care.co.uk 🌐 collier-turf-care.co.uk
📍 Drury Square, Herne Lane, Beeston, Norfolk PE32 2NA



EAST RIDING TURFCARE

📞 01904 608157 ✉️ info@eastridingturfcare.co.uk 🌐 eastridingturfcare.co.uk
📍 Glebe Farm Cottage, Sutton Upon Derwent, York YO41 4BY



GREENTECH SPORTSTURF LTD

📞 01786 480020 ✉️ info@greentechsportsturf.co.uk 🌐 greentechsportsturf.co.uk
📍 Bandeath, Throsk, Stirling FK7 7NP



GROGREEN LTD

📞 01382 418185 ✉️ info@grogreen.co.uk 🌐 grogreen.co.uk
📍 Building B (M & H Compound), Kingwell, Castle Huntly Road, Longforgan by Dundee DD2 5HJ

Regional Technical Support



David Greenshields
Commercial Manager

M 07799 430784
E dgreenshields@barenbrug.co.uk



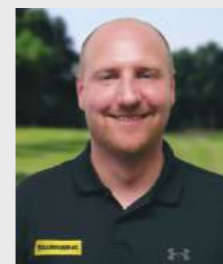
David Howells
Regional Sales Manager
North & West England & Wales

M 07887 503796
E dhowells@barenbrug.co.uk



Pete Blackaby
Regional Sales Manager
South & East England, Ireland &
Northern Ireland

M 07909 786916
E pblackaby@barenbrug.co.uk



Stuart Tait
Regional Sales Manager
Scotland & Northeast England

M 07795 248622
E stait@barenbrug.co.uk



Tom Guiver
Sales Executive; Head Office

M 07825 394438
T 01359 272020
E tguiver@barenbrug.co.uk

Barenbrug

Grass experts since 1904

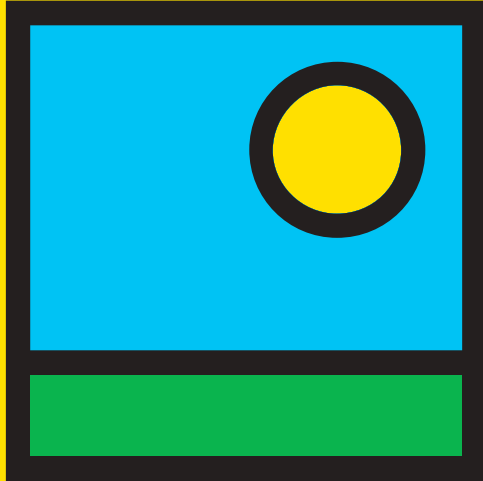
Our profession is plant breeding: selecting and developing quality grass varieties with the unique characteristics needed to meet the ever-increasing demands of amenity turf surfaces.

From its founding days in 1904, the Royal Barenbrug Group has grown into a global seed company with breeding and research stations on six continents. Still privately owned, our knowledge and experience of grass seed is second to none. We specialise in plant breeding, seed production, and the international marketing of grasses across a wide range of industries.

At Barenbrug, we work together as a team to serve our clients wherever they need us. We have a team of technical experts based throughout the UK, as well as office locations across the country and as part of the wider Barenbrug Group worldwide. We make our collective knowledge, experience, and global network available to our clients.

With operating companies in 18 countries on 6 continents, we have been the leading grass seed business in the world for over 120 years.

www.barenbrug.co.uk



BARENBRUG

Grow with Confidence

Barenbrug UK Ltd

33 Perkins Road, Rougham Industrial Estate
Bury St Edmunds, Suffolk
IP30 9ND

T 01359 272000

E info@barenbrug.co.uk

www.barenbrug.co.uk

Conditions of sale

In case of unavailability Barenbrug UK Limited reserves the right to substitute any variety in any mixture with one of similar merit. Any change will be detailed on the bag.
The placing of an order constitutes an acceptance of our terms and conditions of sale by the buyer.
Full terms and conditions can be found at www.barenbrug.co.uk.

